



WE ENHANCE THE RESTAURANT EXPERIENCE!

We at Segers go to work every day to do everything we can to enhance the restaurant experience. With trend-setting chef coats, innovative aprons and comfortable trousers, chefs and serving staff get smart, stylish, modern and functional workwear that simply helps them perform at max.



amfori  BSCI
Trade with purpose



CHEF SHIRTS LONG SLEEVE



White - 000

Black - 015

ART NO 1004263

Women's stretch chef's jacket

Long-sleeved chef's jacket with stretch panels in sleeves and back for improved mobility. This style has a slightly slimmer fit with snap buttons.

- Double-breasted design with snap buttons
- Loop for apron ties and a hanging loop in the collar
- Low-environmental impact materials

MATERIAL

WASH



SIZES

XS / S / M / L / XL / XXL / 3XL /



White - 000

Black - 015

ART NO 1005201

Chef's jacket (Men's)

Men's chef's jacket with a straight cut and long sleeves

- Concealed closure with snap fasteners
- Hanging loop in the collar
- Durable and colourfast fabric

MATERIAL

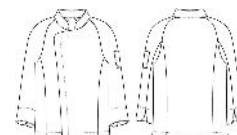
65/35% polyester/cotton - Twill
- 210g/m2

WASH



SIZES

C44 / C46 / C48 / C50 / C52 / C54 /
C56 / C58 / C60 / C62 / C64 /



White - 000

Black - 015

ART NO 1007263

Men's stretch chef's jacket

Long-sleeved chef's jacket with stretch panels in sleeves and back for improved mobility. This style has a slightly slimmer fit with snap buttons.

- Double-breasted design with snap buttons
- Loop for apron ties and a hanging loop in the collar
- Low-environmental impact materials

MATERIAL

WASH



SIZES

XS / S / M / L / XL / XXL / 3XL /





Navy - 002



Light grey - 011



Grey - 014



Olive green - 086

ART NO 1014201

Chef's shirt (Women's)

Modern women's chef's shirt, with long sleeves and a slightly slimmer fit

- Concealed closure with snap fasteners
- Pen pocket on the left side and hanging loop in the collar
- Durable and colourfast fabric

MATERIAL

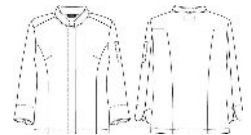
65/35% polyester/cotton - Twill - 210g/m2

WASH



SIZES

C34 / C36 / C38 / C40 / C42 / C44 / C46 / C48 / C50 / C52 / C54 /



Navy - 002



Light grey - 011



Grey - 014



Olive green - 086

ART NO 1019201

Chef's shirt (Men's)

Modern men's chef's shirt with long sleeves and a slightly slimmer fit

- Concealed closure with snap fasteners
- Hanging loop in the collar
- Durable and colourfast fabric

MATERIAL

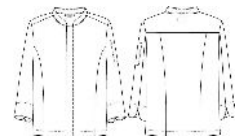
65/35% polyester/cotton - Twill - 210g/m2

WASH



SIZES

C44 / C46 / C48 / C50 / C52 / C54 / C56 / C58 / C60 / C62 / C64 /



White - 000



Black - 015

ART NO 1026261

Chef's shirt (Women's)

Modern women's chef's shirt with long sleeves and a slightly slimmer fit. This design is inspired by a shirt, so it has a rounded hem and is longer at the back.

- Visible button at the neck (remove before washing)
- Loop for apron ties and a hanging loop in the collar
- Low-environmental impact materials

MATERIAL

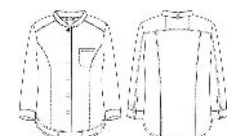
50/50% TENCEL™ lyocell /polyester - Twill - 195g/m2

WASH



SIZES

C34 / C36 / C38 / C40 / C42 / C44 / C46 / C48 / C50 /





White - 000 Black - 015

ART NO 1027261

Chef's shirt (Men's)

Modern men's chef's shirt with long sleeves and a slightly slimmer fit. This design is inspired by a shirt, so it has a rounded hem and is longer at the back.

- Visible button at the neck (remove before washing)
- Loop for apron ties and a hanging loop in the collar
- Low-environmental impact materials

MATERIAL

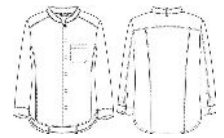
50/50% TENCEL™ lyocell /polyester - Twill - 195g/m2

WASH



SIZES

C44 / C46 / C48 / C50 / C52 / C54 / C56 / C58 / C60 /



White/Black - 915

ART NO 1030650

Chef's jacket (Men's)

Men's chef's jacket with a straight cut and long sleeves

- French cut
- Cufflinks along the cuffs and a hanging loop in the collar
- Soft and cool fabric

MATERIAL

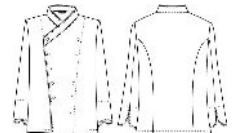
100% cotton - Batavia - 190g /m2

WASH



SIZES

C44 / C46 / C48 / C50 / C52 / C54 / C56 / C58 / C60 / C62 / C64 /



White - 000

ART NO 1031257

Chef's jacket (Children's)

Classic chef's jacket for children with detachable ball buttons. NOT recommended for children under 3 years of age due to the loose buttons.

- Stud buttons (remove before washing)
- Hanging loop in the collar
- Durable and colourfast fabric

MATERIAL

50/50% cotton/polyester - Plain, domestik - 180g/m2

WASH



SIZES

CTL 100 / CTL 110 / CTL 120 / CTL 130 / CTL 140 / CTL 150 /





White/Black - 915

ART NO 1032650

Chef's jacket (Women's)

Straight-cut women's chef's jacket with long sleeves

- French cut and bust darts
- Cufflinks along the cuffs and a hanging loop in the collar
- Soft and cool fabric

MATERIAL

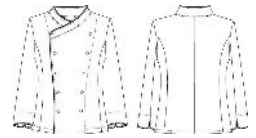
100% cotton - Batavia - 190g /m2

WASH



SIZES

C34 / C36 / C38 / C40 / C42 / C44 / C46 / C48 / C50 /



White - 000



Black - 015

ART NO 1057201

Chef's shirt (Men's)

Modern men's chef's jacket with long sleeves and a slightly slimmer fit.

- Concealed closure with snap fasteners
- Hanging loop in the collar
- Durable and colourfast fabric

MATERIAL

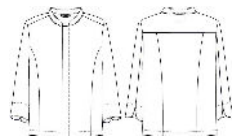
65/35% polyester/cotton - Twill - 210g/m2

WASH



SIZES

C42 / C44 / C46 / C48 / C50 / C52 / C54 / C56 / C58 / C60 / C62 / C64 / C66 / C68 /



White - 000



Black - 015

ART NO 1058201

Chef's shirt (Women's)

Modern women's chef's shirt with long sleeves and a slightly slimmer fit

- Concealed closure with snap fasteners
- Hanging loop in the collar
- Durable and colourfast fabric

MATERIAL

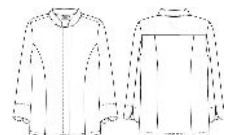
65/35% polyester/cotton - Twill - 210g/m2

WASH



SIZES

C34 / C36 / C38 / C40 / C42 / C44 / C46 / C48 / C50 / C52 /





Dark blue - 076

ART NO 1073628

Chef's jacket (Men's)

Classic men's chef's jacket with a straight cut and long sleeves

- Concealed closure with snap fasteners
- Hanging loop in the collar
- Cotton denim

MATERIAL

100% cotton - Denim - 220g /m2, (7,5 oz)

WASH



Garment washed



SIZES

C44 / C46 / C48 / C50 / C52 / C54 / C56 / C58 / C60 / C62 / C64 /



White - 000

ART NO 1091261

Shirt (Men's)

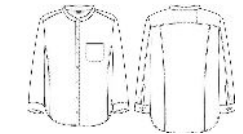
Modern men's chef's shirt with long sleeves and a slightly slimmer fit

- Rounded hem and longer at the back
- Loop for apron ties and a hanging loop in the collar
- Low-environmental impact materials

MATERIAL

50/50% TENCEL™ lyocell /polyester - Twill - 195g/m2

WASH



SIZES

C44 / C46 / C48 / C50 / C52 / C54 / C56 / C58 / C60 /



White - 000

ART NO 1330651

Chef's jacket (Men's)

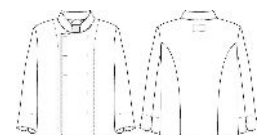
Classic men's chef's jacket with a straight cut and long sleeves

- Detachable ball buttons included
- Hanging loop in the collar
- Machine-washable, durable and cooling

MATERIAL

100% cotton - Satin - 240g/m2

WASH



SIZES

C44 / C46 / C48 / C50 / C52 / C54 / C56 / C58 / C60 / 62/64 / 66/68 /





White - 000

ART NO 1335651

Chef's jacket (Women's)

Classic women's chef's jacket with a straight cut and long sleeves

- Detachable ball buttons included
- Bust darts and hanging loop in the collar
- Machine-washable, durable and cooling

MATERIAL

100% cotton - Satin - 240g/m2

WASH



SIZES

C34 / C36 / C38 / C40 / C42 / C44 / C46 / C48 / C50 /



White - 000



Black - 015

ART NO 1603201

Chef's jacket (Men's)

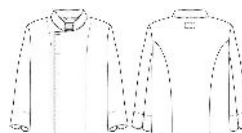
Men's chef's jacket in a classic, double-breasted design with a straight cut and long sleeves. Sizes C146-154 are about 5 cm longer in the sleeves and torso.

- Detachable ball buttons included
- Hanging loop in the collar
- Durable and colourfast fabric

MATERIAL

65/35% polyester/cotton - Twill - 210g/m2

WASH



SIZES

C42 / C44 / C46 / C48 / C50 / C52 / C54 / C56 / C58 / C60 / C62 / C64 / C66 / C68 / C146 / C148 / C150 / C152 / C154 /



White - 000



Black - 015

ART NO 1604201

Chef's jacket (Women's)

Women's chef's jacket with long sleeves and a slightly slimmer fit

- Concealed closure
- Bust darts and hanging loop in the collar
- Durable and colourfast fabric

MATERIAL

65/35% polyester/cotton - Twill - 210g/m2

WASH



SIZES

C34 / C36 / C38 / C40 / C42 / C44 / C46 / C48 / C50 / C52 / C54 / C56 / C58 /





White - 000

Black - 015

ART NO 1607201

Chef's jacket (Men's)

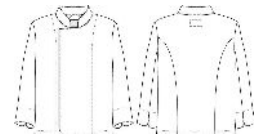
Modern men's chef's jacket with long sleeves and a straight cut

- Concealed closure with snap fasteners
- Hanging loop in the collar
- Colourfast and durable fabric

MATERIAL

65/35% polyester/cotton - Twill
- 210g/m2

WASH



SIZES

C42 / C44 / C46 / C48 / C50 / C52 /
C54 / C56 / C58 / C60 / C62 / C64 /
C66 / C68 / C70 /



White - 000

Black - 015

ART NO 1608201

Chef's jacket (Women's)

Classic women's chef's jacket with long sleeves and a slightly slimmer fit

- Detachable ball buttons included
- Bust darts and hanging loop in the collar
- Durable and colourfast fabric

MATERIAL

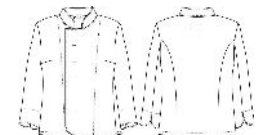
65/35% polyester/cotton - Twill
- 210g/m2

WASH



SIZES

C34 / C36 / C38 / C40 / C42 / C44 /
C46 / C48 / C50 / C52 / C54 / C56 /



White - 000

ART NO 1750280

Lab coat (Unisex)

Classic lab coat with front closure in a unisex design. Back length approx. 102 cm

- Two substantial pockets
- Adjustable strap at the back
- Durable and colourfast fabric

MATERIAL

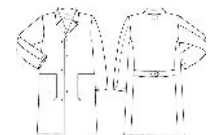
65/35% polyester/cotton - Twill
- 245g/m2

WASH



SIZES

XS / S / M / L / XL / XXL / 3XL /





White - 000

ART NO 2030650

Chef's jacket (Men's)

Classic men's chef's jacket with a straight cut and long sleeves

- French cut
- Hanging loop in the collar
- Soft and cool fabric

MATERIAL

100% cotton - Batavia - 190g /m2

WASH



SIZES

C44 / C46 / C48 / C50 / C52 / C54 / C56 / C58 / C60 / C62 / C64 / B50 / B52 / B54 / B56



White - 000

ART NO 2035650

Chef's jacket (Women's)

French-cut chef's jacket with bust darts.

- Bust darts, hanging look in the collar
- Tapered closure
- Soft and cool fabric

MATERIAL

100% cotton - Batavia - 190g /m2

WASH



SIZES

C34 / C36 / C38 / C40 / C42 / C44 / C46 / C48 / C50 /



White - 000

ART NO 4030250

Chef's jacket (Men's)

Classic men's chef's jacket with a straight cut and short sleeves

- French cut
- Hanging loop in the collar
- Machine-washable, durable and cooling

MATERIAL

60/40% cotton/polyester - Satin - 200g/m2

WASH



SIZES

C44 / C46 / C48 / C50 / C52 / C54 / C56 / C58 / C60 / C62 / C64 /





CHEF SHIRTS SHORT SLEEVE



White - 000

Black - 015

ART NO 1002257

Chef's jacket (Women's)

Straight-cut women's chef's jacket with short sleeves

- Bust darts
- Pen pocket on the left side and hanging loop in the collar
- Durable and colourfast fabric

MATERIAL

50/50% cotton/polyester - Plain, domestik - 180g/m2

WASH



SIZES

XS / S / M / L / XL / XXL / 3XL /



White - 000

Black - 015

ART NO 1003201

Chef's jacket (Men's)

Men's chef's jacket with a straight cut and short sleeves

- Concealed closure with snap fasteners
- Pen pocket on the left side and hanging loop in the collar
- Durable and colourfast fabric

MATERIAL

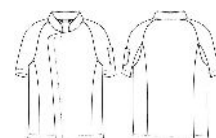
65/35% polyester/cotton - Twill - 210g/m2

WASH



SIZES

C44 / C46 / C48 / C50 / C52 / C54 / C56 / C58 / C60 / C62 / C64 /



Navy - 002

Dark grey - 010

Olive green - 086

ART NO 1006272

Chef's shirt Action stretch (Unisex)

A chef's shirt in a unisex design, inspired by the world of sports. The concealed mesh panel in the back and the thin stretch fabric make this shirt airy and cool. Minimalist design

- Mesh in the back with a loose panel for an "aircon" effect
- Concealed snap fasteners and chestpocket
- Thin fabric with stretch

MATERIAL

50/26/24% polyester/cotton /polyester-stretch, poplin. 120g /m²

WASH



SIZES

XXS / XS / S / M / L / XL / XXL / 3XL /





Black - 015

ART NO 1011264

Chef's shirt stretch (Unisex)

Chef's shirt with unisex styling and short sleeves. Low-environmental impact stretch fabric provides superb comfort. Unisex design with slits in the side seams ensures a perfect fit. Practical pen pocket on sleeve. Loop in the collar for bib apron.

- Low-environmental impact fabric
- Stretch fabric for superb comfort
- Pen pocket
- Loop in the collar for bib apron
- Washable at 85°C

MATERIAL

WASH



SIZES

XXS / XS / S / M / L / XL / XXL / 3XL /



Navy - 002



Light grey - 011



Grey - 014



Olive green - 086

ART NO 1012201

Chef's shirt (Women's)

Modern women's chef's shirt with short sleeves and a slightly slimmer fit

- Concealed closure with snap fasteners
- Pen pocket on the left side and hanging loop in the collar
- Durable and colourfast fabric

MATERIAL

65/35% polyester/cotton - Twill - 210g/m2

WASH



SIZES

C34 / C36 / C38 / C40 / C42 / C44 / C46 / C48 / C50 / C52 / C54 /



Navy - 002



Light grey - 011



Grey - 014



Olive green - 086

ART NO 1017201

Chef's shirt (Men's)

Modern men's chef's shirt with short sleeves and a slightly slimmer fit

- Concealed closure with snap fasteners
- Pen pocket on the left side and hanging loop in the collar
- Durable and colourfast fabric

MATERIAL

65/35% polyester/cotton - Twill - 210g/m2

WASH



SIZES

C44 / C46 / C48 / C50 / C52 / C54 / C56 / C58 / C60 / C62 / C64 /





White - 000 Black - 015

ART NO 1023261

Chef's shirt (Men's)

Modern men's chef's shirt with short sleeves and a slightly slimmer fit. This design is inspired by a shirt, so it has a rounded hem and is longer at the back.

- Visible button at the neck (remove before washing)
- Loop for apron ties and a hanging loop in the collar
- Low-environmental impact materials

MATERIAL

50/50% TENCEL™ lyocell /polyester - Twill - 195g/m2

WASH



SIZES

C44 / C46 / C48 / C50 / C52 / C54 / C56 / C58 / C60 /



White - 000 Black - 015

ART NO 1024261

Chef's shirt (Women's)

Modern women's chef's shirt with short sleeves and a slightly slimmer fit. This design is inspired by a shirt, so it has a rounded hem and is longer at the back.

- Visible button at the neck (remove before washing)
- Loop for apron ties and a hanging loop in the collar
- Low-environmental impact materials

MATERIAL

50/50% TENCEL™ lyocell /polyester - Twill - 195g/m2

WASH



SIZES

C34 / C36 / C38 / C40 / C42 / C44 / C46 / C48 / C50 /



White/Black - 915

ART NO 1029650

Chef's jacket (Men's)

Straight-cut men's chef's jacket

- French cut
- Hanging loop in the collar
- Soft and cool fabric

MATERIAL

100% cotton - Batavia - 190g /m2

WASH



SIZES

C44 / C46 / C48 / C50 / C52 / C54 / C56 / C58 / C60 / C62 / C64 /





White - 000

ART NO 1033650

Chef's shirt (Men's)

Modern men's chef's shirt with a straight cut and short sleeves

- Concealed closure with snap fasteners
- Hanging loop in the collar
- Soft and cool fabric

MATERIAL

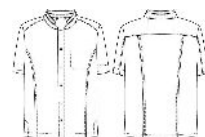
100% cotton - Batavia - 190g /m2

WASH



SIZES

C44 / C46 / C48 / C50 / C52 / C54 / C56 / C58 / C60 / C62 /



White - 000



Black - 015

ART NO 1053201

Chef's shirt (Men's)

Modern men's chef's jacket with short sleeves and a slightly slimmer fit. Sizes C146-154 are about 5 cm longer in the sleeves and torso.

- Concealed closure with snap fasteners
- Hanging loop in the collar
- Durable and colourfast fabric

MATERIAL

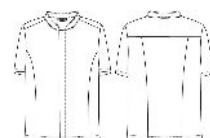
65/35% polyester/cotton - Twill - 210g/m2

WASH



SIZES

C40 / C42 / C44 / C46 / C48 / C50 / C52 / C54 / C56 / C58 / C60 / C62 / C64 / C66 / C68 / C70 / C146 / C148 / C150 / C152 / C154 /



White - 000



Black - 015

ART NO 1056201

Chef's shirt (Women's)

Modern women's chef's shirt with short sleeves and a slightly slimmer fit

- Concealed closure with snap fasteners
- Hanging loop in the collar
- Durable and colourfast fabric

MATERIAL

65/35% polyester/cotton - Twill - 210g/m2

WASH



SIZES

C32 / C34 / C36 / C38 / C40 / C42 / C44 / C46 / C48 / C50 / C52 / C54 / C56 /





White - 000

ART NO 1069250

Chef's jacket (Men's)

Straight-cut men's chef's jacket with short sleeves

- Concealed closure with snap fasteners
- Loops for apron straps and a hanging loop in the collar
- Stretchy and durable fabric

MATERIAL

60/40% cotton/polyester - Satin - 200g/m2

WASH



SIZES

C44 / C46 / C48 / C50 / C52 / C54 / C56 / C58 / C60 /



Black - 015

ART NO 1069271

Men's stretch chef's jacket

Straight-cut men's chef's jacket with short sleeves

- Concealed closure with snap fasteners
- Loops for apron straps and a hanging loop in the collar
- Stretchy and durable fabric

MATERIAL

57/40/3% cotton/polyester/XLA stretch - Satin - 225g/m2

WASH



SIZES

C44 / C46 / C48 / C50 / C52 / C54 / C56 / C58 / C60 /



Dark blue - 076

ART NO 1071628

Chef's jacket (Men's)

Classic men's chef's jacket with a straight cut and short sleeves

- Concealed closure with snap fasteners
- Hanging loop in the collar
- Cotton denim

MATERIAL

100% cotton - Denim - 220g /m2, (7,5 oz)

WASH



Garment washed



SIZES

C44 / C46 / C48 / C50 / C52 / C54 / C56 / C58 / C60 / C62 / C64 /



Blue - 005

ART NO 1087769

Shirt (Men's)

Modern men's chef's shirt with short sleeves and a slightly slimmer fit

- Concealed closure with snap fasteners
- Slightly rounded hem at the back and hanging loop in the collar
- Rustic, cooling material

MATERIAL

53/47% cotton/linen - Plain, yarndyed - 194g/m2

WASH



Shrinkage approx. 6%

SIZES

C46 / C48 / C50 / C52 / C54 / C56 / C58 / C60 / C62 /



White - 000



Black - 015

ART NO 1501262

Atacac Chef's shirt, 3/4-sleeves, stretch effect (Unisex)

Modern men's chef's shirt with 3/4 sleeves and a straight cut

- Concealed snap fasteners
- Hanging loop in the collar
- Low-environmental impact materials

MATERIAL

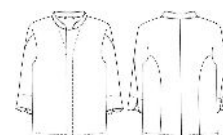
45/20/35% virgin polyester /recycled polyester/BCI cotton - Twill - 210g/m2

WASH



SIZES

XXS / XS / S / M / L / XL / XXL / 3XL /



White - 000



Black - 015

ART NO 1601201

Chef's jacket (Men's)

Men's chef's jacket in a classic, double-breasted design with a straight cut and short sleeves

- Detachable ball buttons included
- Hanging loop in the collar
- Durable and colourfast fabric

MATERIAL

65/35% polyester/cotton - Twill - 210g/m2

WASH



SIZES

C42 / C44 / C46 / C48 / C50 / C52 / C54 / C56 / C58 / C60 / C62 / C64 / C66 / C68 /





White - 000

Black - 015

ART NO 1602201

Chef's jacket (Women's)

Women's chef's jacket with short sleeves and a slightly slimmer fit

- Concealed closure
- Bust darts and hanging loop in the collar
- Durable and colourfast fabric

MATERIAL

65/35% polyester/cotton - Twill
- 210g/m2

WASH



SIZES

C34 / C36 / C38 / C40 / C42 / C44 /
C46 / C48 / C50 / C52 /



White - 000

Black - 015

ART NO 1605201

Chef's jacket (Men's)

Modern men's chef's jacket with short sleeves and a straight cut

- Concealed closure with snap fasteners
- Hanging loop in the collar
- Durable and colourfast fabric

MATERIAL

65/35% polyester/cotton - Twill
- 210g/m2

WASH



SIZES

C42 / C44 / C46 / C48 / C50 / C52 /
C54 / C56 / C58 / C60 / C62 / C64 /
C66 / C68 /



White - 000

Black - 015

ART NO 1606201

Chef's jacket (Women's)

Classic women's chef's jacket with short sleeves and a slightly slimmer fit

- Detachable ball buttons included
- Bust darts and hanging loop in the collar
- Durable and colourfast fabric

MATERIAL

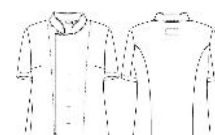
65/35% polyester/cotton - Twill
- 210g/m2

WASH



SIZES

C34 / C36 / C38 / C40 / C42 / C44 /
C46 / C48 / C50 / C52 /





Mon Jun 26 2023

GASTROMA SVERIGE AB



White - 000 Black - 015 Olive green - 086 Dark navy - 202

ART NO 6109299

Chef's polo shirt (Unisex)

Polo shirt with woven collar and details, suitable for kitchen and serving staff. Unisex styling and a comfortable fit. Pen pocket on one sleeve and snap fasteners at the front. Loop in the collar for bib apron.

- Unisex design
- Pen pocket
- Loop in collar for apron
- Durable fabric
- Washable at 60°C

MATERIAL

50% cotton/50% polyester, 220 g/m²

WASH



SIZES

XXS / XS / S / M / L / XL / XXL / 3XL



White - 000 Black - 015

ART NO 0800263

Zero Waste Set

Asian-inspired, short-sleeved chef's shirt and ¾-length trousers, both in recycled material and designed to minimise fabric waste in production. With its design and unique material, the product is not only light and comfortable to wear, but also saves resources by recycling waste material.

- Limited Edition
- Zero Waste
- True unisex

MATERIAL

50/50% Refibra Lyocell (TENCEL™)/Repreve Recycled Polyester - Twill - 195g/m²

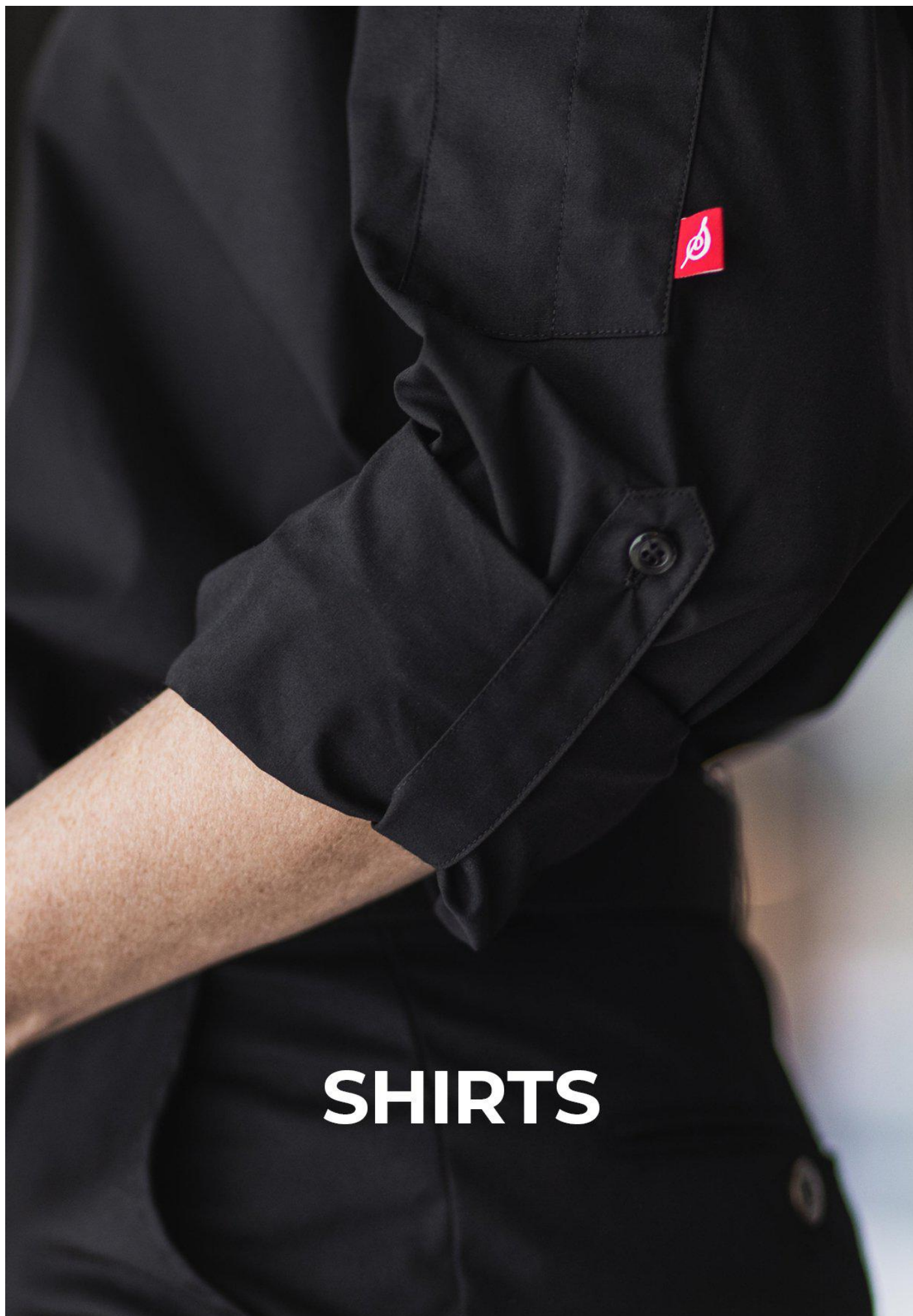
WASH



SIZES

XS / S / M / L / XL







White - 000



Black - 015



Sand - 024



White/Black - 915



ART NO 1210299

Casual Shirt (Women's)

Normal-fit women's shirt with bust darts. The shirt has box pleats for range of motion and a nicely shaped hem.

- Roll-tab sleeve for adjustable sleeve length
- Practical pen pocket on sleeve
- Comfortable and durable fabric

MATERIAL

60/40% cotton/polyester - Twill
- 140g/m²

WASH



SIZES

XS / S / M / L / XL / XXL / 3XL



White - 000



Black - 015



Sand - 024



White/Black - 915



ART NO 1211299

Casual Shirt (Men's)

Normal-fit men's shirt. The shirt has box pleats at the back for range of motion and can be worn loose or tucked in at the waist.

- Roll-tab sleeve for adjustable sleeve length
- Practical pen pocket on sleeve
- Comfortable and durable fabric

MATERIAL

60/40% cotton/polyester - Twill
- 140g/m²

WASH



SIZES

XS / S / M / L / XL / XXL / 3XL



POLOSHIRTS & T-SHIRTS



Mon Jun 26 2023

GASTROMA SVERIGE AB



Black - 015 Off-white - 020 White/Black - 915

ART NO 6103699

Heavy T-shirt Unisex

Unisex T-shirt with a generous fit in heavy stretch jersey fabric.

- Woven loop at the nape of the neck for bib apron
- Can be embroidered
- The weight of the durable fabric is about 200 gr

MATERIAL

100% cotton - Single jersey - 200 g/m²

WASH



SIZES

XXS / XS / S / M / L / XL / XXL / 3XL



Black - 015 Off-white - 020 White/Black - 915

ART NO 6105699

Heavy T-shirt Long-sleeved Unisex

Unisex long-sleeved T-shirt with a generous fit in heavy stretch jersey fabric.

- Woven loop at the nape of the neck for bib apron
- Can be embroidered
- The weight of the durable fabric is about 200 gr

MATERIAL

100% cotton - Single jersey - 200 g/m²

WASH



SIZES

XXS / XS / S / M / L / XL / XXL / 3XL





DRESSES



Mon Jun 26 2023

GASTROMA SVERIGE AB



Black - 015



White/Black - 915



ART NO 2502299

Shirt Dress

Short-sleeved dress with puff sleeves and a feminine fit.

- Practical pen pocket on sleeve
- Comfortable side pockets
- Side slits for good range of motion
- Comfortable and durable fabric

MATERIAL

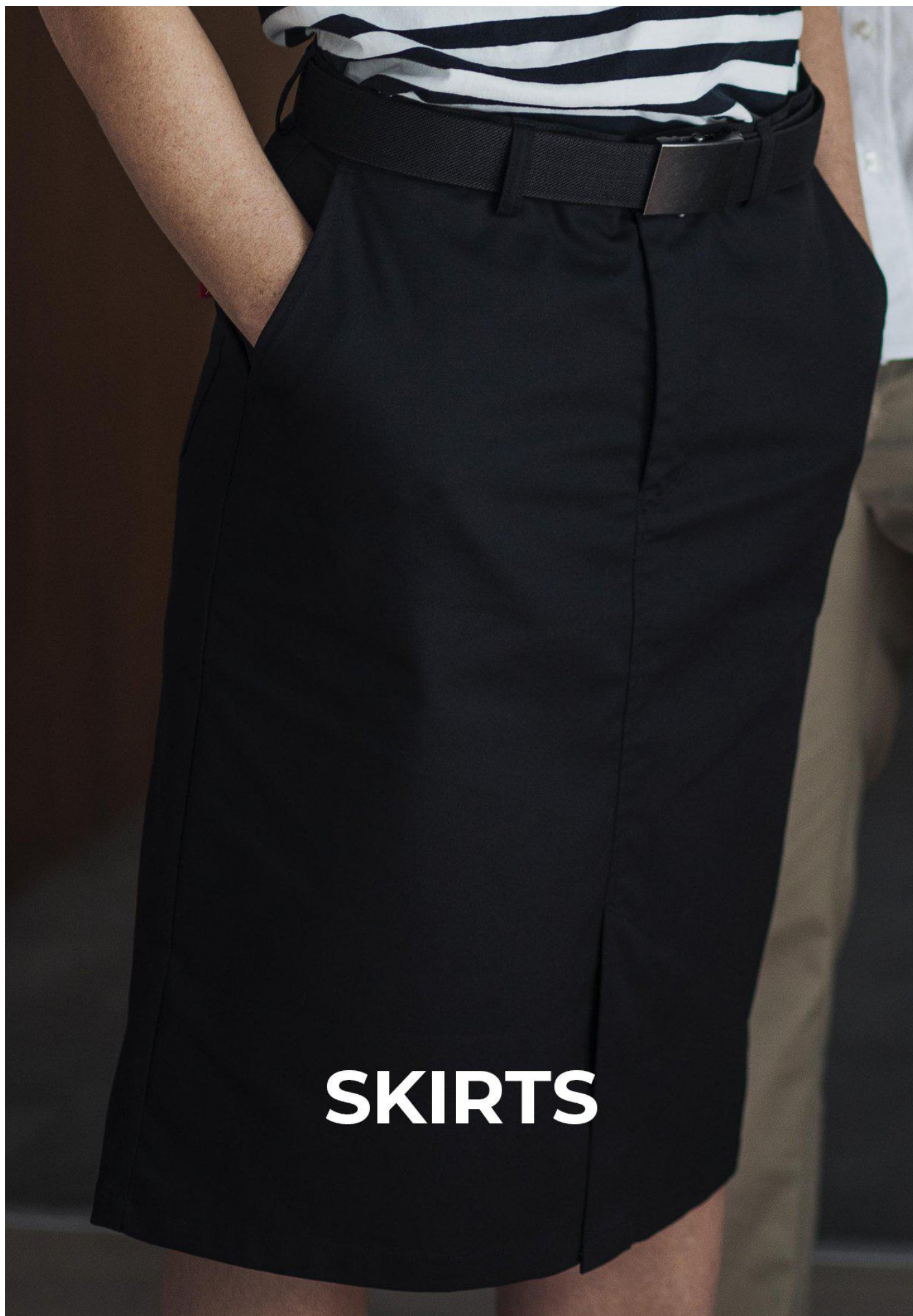
60/40% cotton/polyester - Twill
- 140g/m²

WASH



SIZES

XS / S / M / L / XL / XXL / 3XL





Mon Jun 26 2023

GASTROMA SVERIGE AB



Black - 015



Beige - 023

ART NO 2309270

Pencil Skirt

Normal-fit pencil skirt. The skirt stops just below the knee.

- Slashed side pockets
- Patch pockets at the back
- Stretchy and durable fabric

MATERIAL

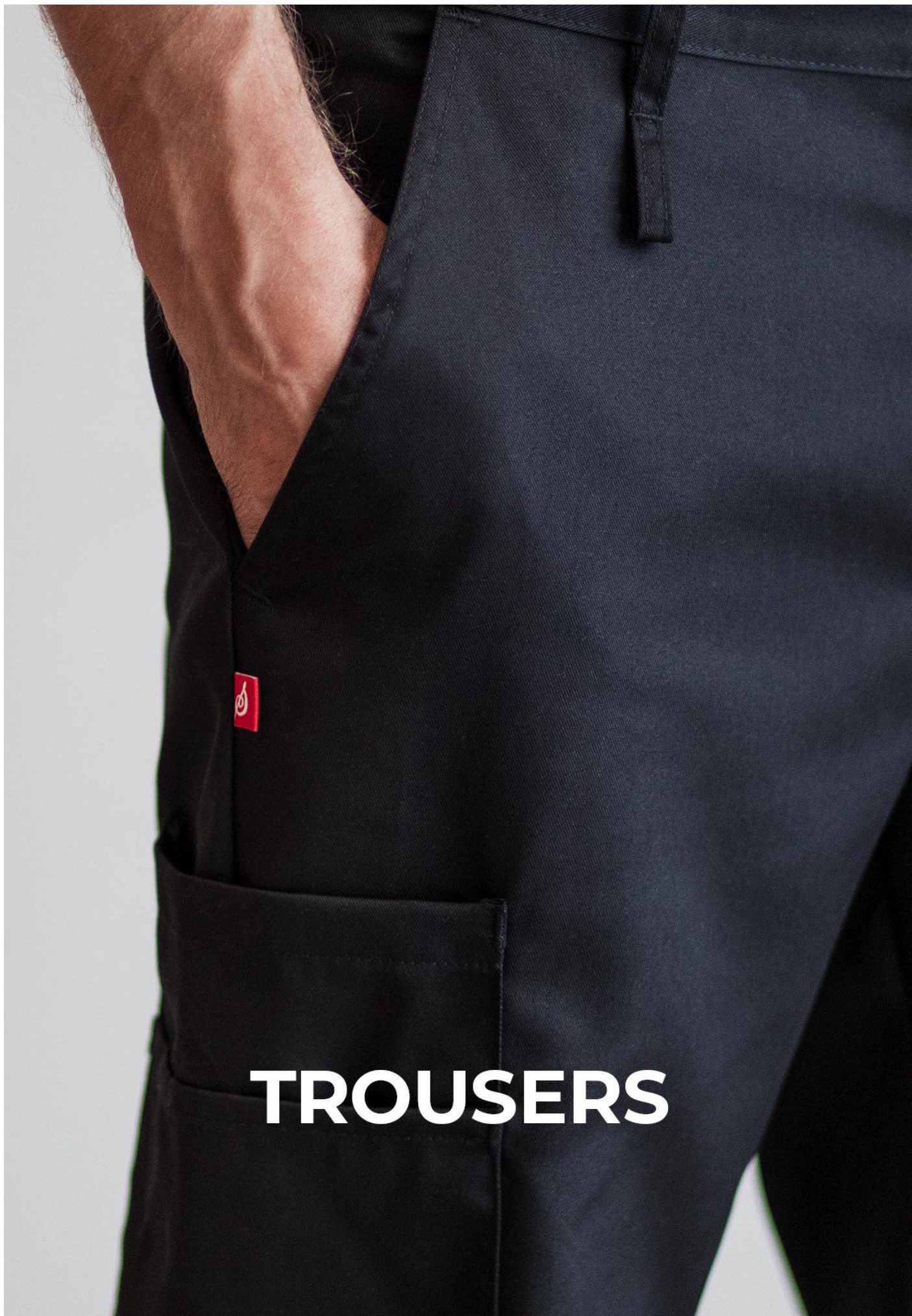
WASH



SIZES

XS / S / M / L / XL / XXL / 3XL







Mon Jun 26 2023

GASTROMA SVERIGE AB



Black - 015



Beige - 023

ART NO 8634270

Chinos (Women's)

Women's chino-style trousers with a modern fit that can be both normal or more relaxed, depending on the size you choose. Leg hems can be easily adjusted for a longer length.

- Fly with zip
- Waistband with belt loops
- Slashed side pockets and piped pockets at the back
- Stretchy and durable fabric.
- Adjustable leg length

MATERIAL

WASH



SIZES

XS / S / M / L / XL / XXL / 3XL



Black - 015



Beige - 023

ART NO 8635270

Chinos (Men's)

Men's chino-style trousers with a modern fit that can be both normal or more relaxed, depending on the size you choose. Leg hems can be easily adjusted for a longer length.

- Fly with zip
- Waistband with belt loops
- Slashed side pockets and piped pockets at the back
- Stretchy and durable fabric
- Adjustable leg length

MATERIAL

WASH



SIZES

XS / S / M / L / XL / XXL / 3XL





BIB APRONS



White - 000

Grey - 014

Black - 015

Dark red - 043

ART NO 4069201

Bib apron

Two-coloured bib apron with spacious pocket.

- 70 x 100 cm
- Special pocket for mobile phone
- Loop on the inside for easy hanging
- Durable and colourfast fabric
- Adjustable neck strap with snap fasteners

MATERIAL

WASH



SIZES

one size







Mon Jun 26 2023

GASTROMA SVERIGE AB



Black - 015



Dark red - 043

ART NO 0578282

Docker Hat

Unisex cap with a fold-up,
similar to a beanie hat.

- The size can be adjusted
using the metal buckle at the
back
- Durable and colourfast fabric

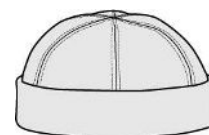
MATERIAL

WASH



SIZES

one size







Black - 015



Sand - 024

ART NO 0576999

Belt elastic

Elasticated textile belt with metal buckle with the Segers logo.

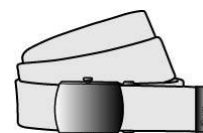
- Available in two lengths: 100cm + 135 cm
- The elastic material makes it very comfortable to wear

MATERIAL

93/7% polyester/elastane

WASH**SIZES**

S/M / L/XL



Black - 015



Dark red - 043

ART NO 0577699

Scarf

Cotton neckerchief with a classic print that combines a paisley pattern with Segers' logo.

- 50 x 50 cm
- Thin, soft 100% cotton fabric.

MATERIAL

100% cotton

WASH**SIZES**

50x50cm





WAIST APRONS



Mon Jun 26 2023

GASTROMA SVERIGE AB



White - 000

Grey - 014

Black - 015

Dark red - 043

ART NO 4068201

Waist apron

Two-coloured waist apron with spacious pockets.

- 80 x 55 cm
- Special pocket for mobile phone
- Loop on the inside for easy hanging
- Durable and colourfast fabric

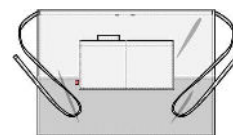
MATERIAL

WASH



SIZES

one size



SIZES AND MEASUREMENTS

The dimensions in the table below are **body measurements**. The dimensions are taken wearing underwear. Width for movement has already been added to each model and varies according to model.

WOMEN'S: C40 RANGE / S M L RANGE (Women's)

	XXS		XS		S		M		L		XL		XXL		3XL		4XL
	C30	C32	C34	C36	C38	C40	C42	C44	C46	C48	C50	C52	C54	C56	C58	C60	C62
Chest measurement	72	76	80	84	88	92	96	100	104	110	116	122	128	134	140	146	152
Waist	56	60	64	68	72	76	80	84	88	94	100	106	112	118	124	130	136
Hips	80	84	88	92	96	100	104	108	112	117	122	127	132	137	142	147	152
Inseam, trousers*	75	75	76	77	78	78	79	79	79	80	80	80	81	81	81	81	81

Segers' +range has an additional 8 cm at the hips in each size.

MEN'S: C50 RANGE/ S M L RANGE (Men's)

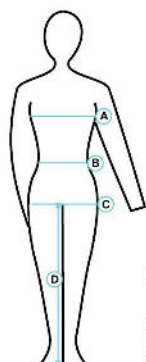
	XXS		XS		S		M		L		XL		XXL		3XL		4XL
	C38	C40	C42	C44	C46	C48	C50	C52	C54	C56	C58	C60	C62	C64	C66	C68	C70
Chest	76	80	84	88	92	96	100	104	108	112	116	120	126	132	138	144	150
Waist	64	68	72	76	80	84	88	92	96	100	104	108	114	120	126	132	138
Hips	83	87	91	95	99	103	107	111	115	119	123	127	133	139	145	151	157
Collar size*	34	35-36		37-38		39-40		41-42		43-44		45-46		47-48		49-50	
Inseam, trousers*	76	76	76	77	78	79	80	81	82	83	83	84	84	85	85	85	85

The C150 RANGE has an additional 6 cm for the inseam length of each size.

CONVERSION TABLE: UNISEX - MEN'S & WOMEN'S SIZES

Size Unisex	XXS	XS	S	M	L	XL	XXL	3XL	4XL
Corresponds to Men's (C-size)	C38	C40-42	C44-46	C48-50	C52-54	C56-58	C60-62	C64-66	C68-70
Corresponds to Men's (S M L)	XXS	XS	S	M	L	XL	XXL	3XL	4XL
Corresponds to Women's (C-size)	C32	C34-36	C38-40	C42-44	C46-48	C50	C52-54	C56-58	C60-62
Corresponds to Women's (S M L)	XS	XS/S	S/M	M/L	L/XL	XL	XXL	3XL	4XL

*Garment dimensions, not body measurements



- A = Chest measurement: taken over the highest point.
- B = Waist
- C = Hips: taken over the widest point.
- D = Inseam length, garment dimensions.

Start from the hip measurement when sizing trousers.
Start from bust/chest measurement when sizing tops.

CAPS:

Size	S	M	L	XL
Circumference*	54	57	60	63
Size	S/M		L/XL	
Circumference*	54-58		59-63	

SEGERS +

Garments with a more generous fit.

Segers has developed a line that we call **+(plus)**. The aim is to provide clothing for those of us who have a more curvy figure. You choose your size based on your chest measurement - this **+**model of tunic is more A-line with more generous measurements over the hips. Remember that when you select sizes for your top and bottom, always use your chest and hip measurements respectively. These measurements do not always give the same garment size.



SEGERS FABRIKER AB
Företagsgatan 30, 504 64 Borås, SWEDEN
www.segers.com / customercare@segers.com / +46 33-23 10 00